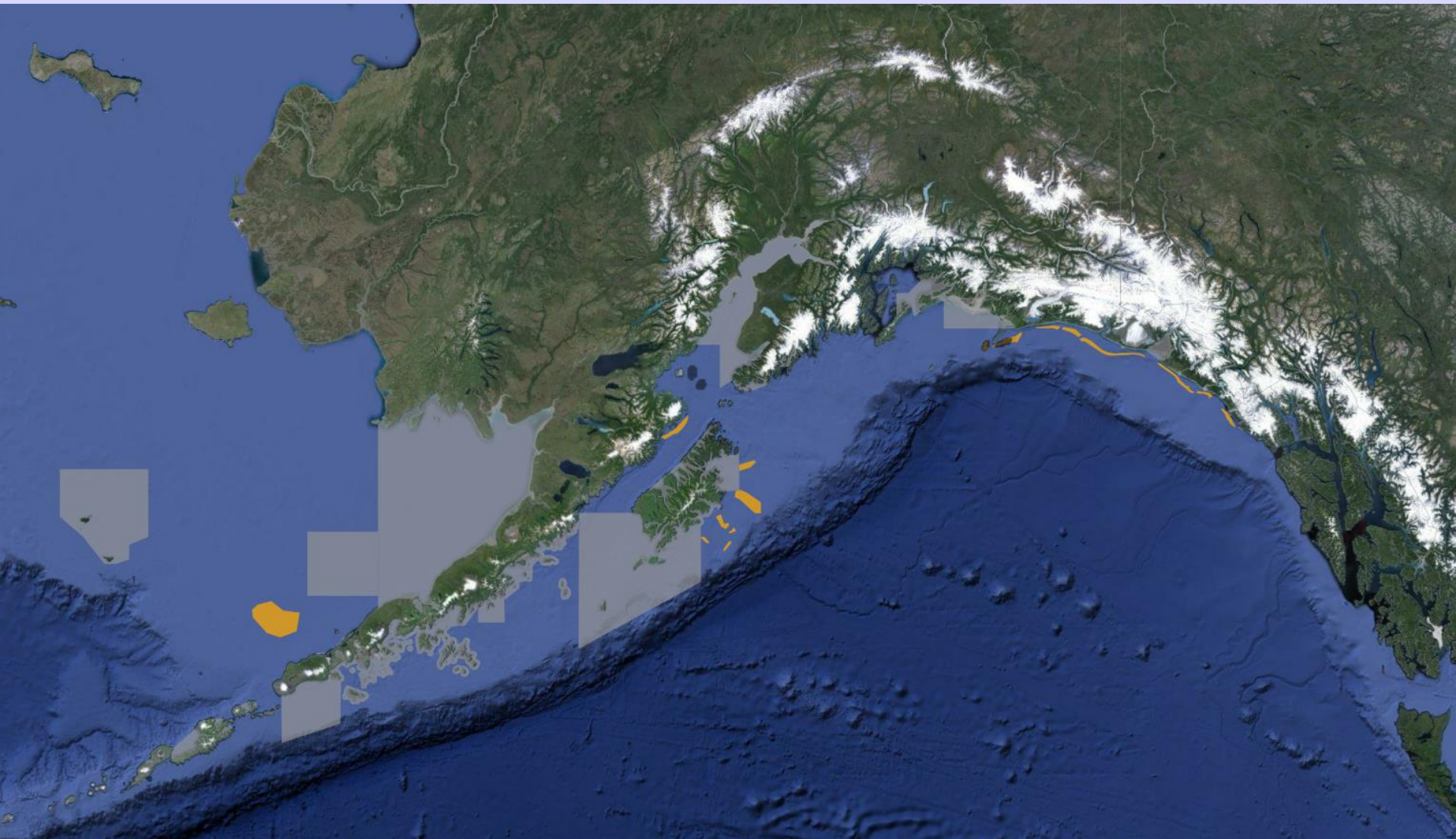


STOCK ASSESSMENT AND FISHERY EVALUATION REPORT FOR THE WEATHERVANE SCALLOP FISHERY OFF ALASKA

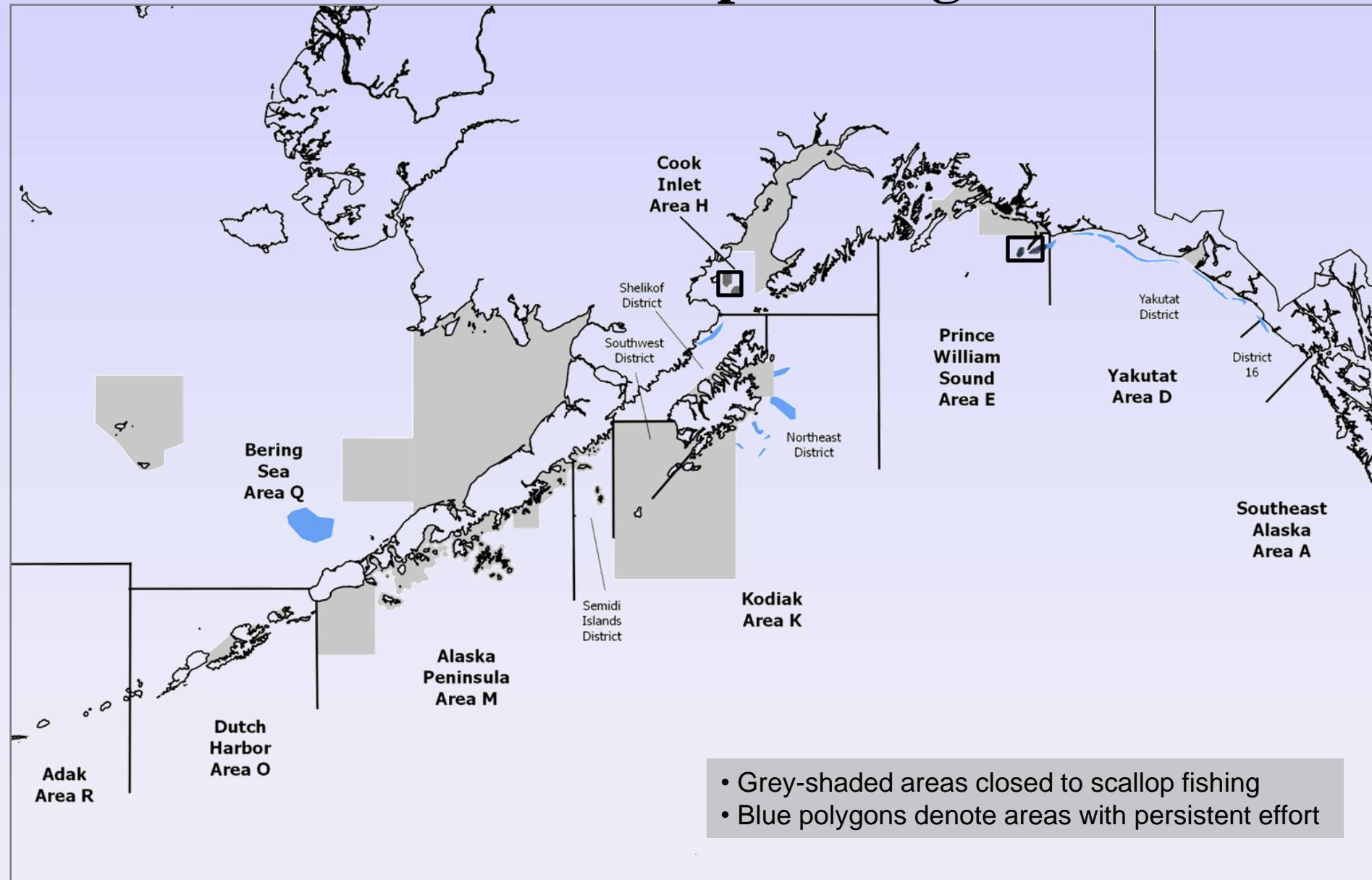
Compiled by the Scallop Plan Team, March 2016



- Fishery Overview
- Management Overview
- Recent Fishery Performance
- Program Changes

Fishery Overview

Weathervane Scallop Fishing Areas



Weathervane Scallop Fishery Overview

Federal Waters

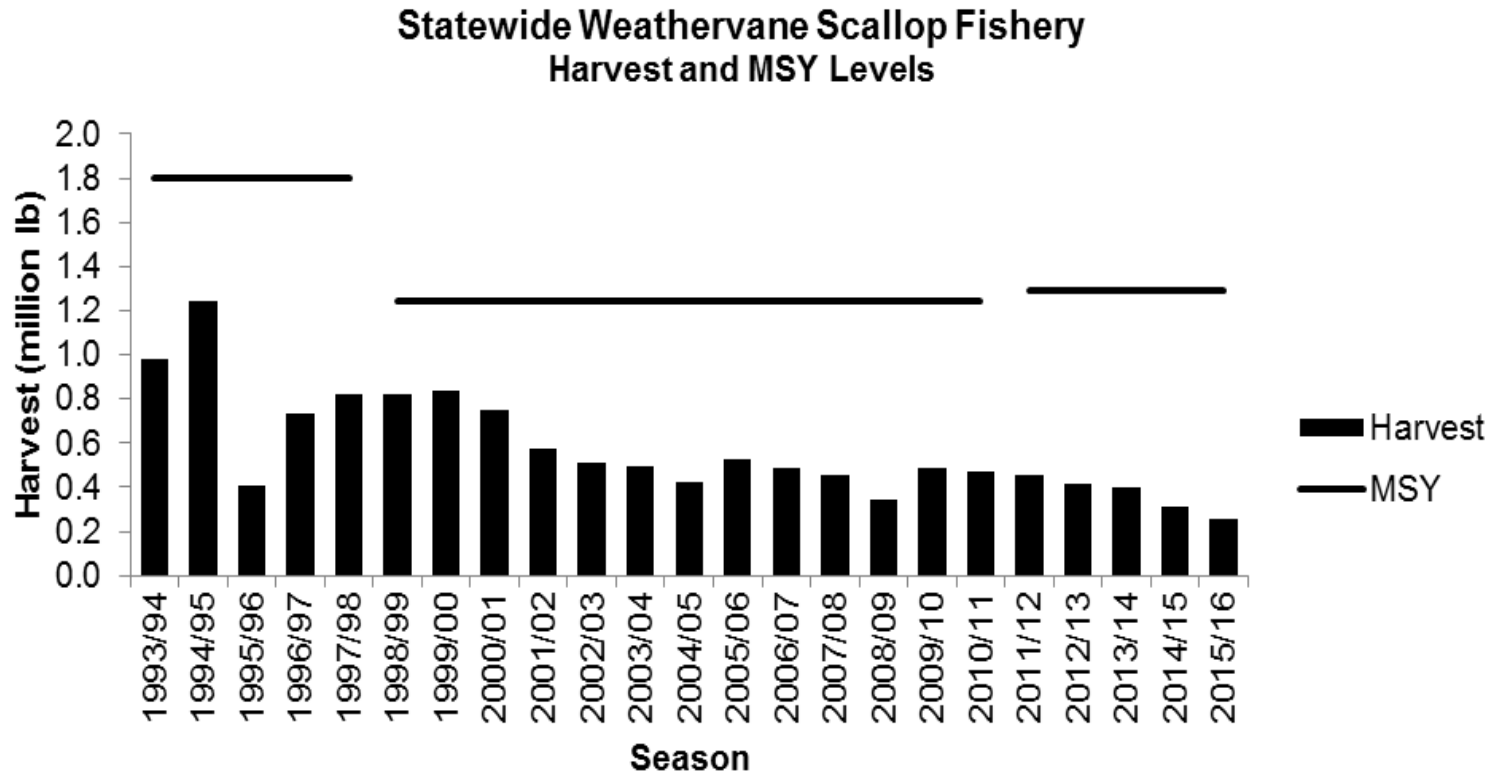
- 9 Federal LLPs
 - 7 LLPs permitted to deploy two 15 ft dredges
 - 2 vessels permitted to deploy two 10 ft dredges
 - Cook Inlet: single 6 ft dredge

State waters

- Open access state water fishery beginning in 2014
- State waters closed to scallop fishing in many places
- Known scallop beds in state waters not closed to scallop fishing: District 16, Yakutat District, Area E (Kayak Island), Kodiak Shelikof District, and Area O (Dutch Harbor)



MSY, OY, and Overfishing Definition



- MSY definition based on average 1990-1997 harvest with 1995 excluded
- MSY = 1.29 million lb scallop meats
- In absence of spawning biomass estimate the default OFL is the MSY of 1.29 million lb of shucked meats
- maxABC = 90% of OFL
- SPT recommendation for ABC = 1.161 mil lb (90% of OFL) for 2016/17

Management Overview

Stock Assessment

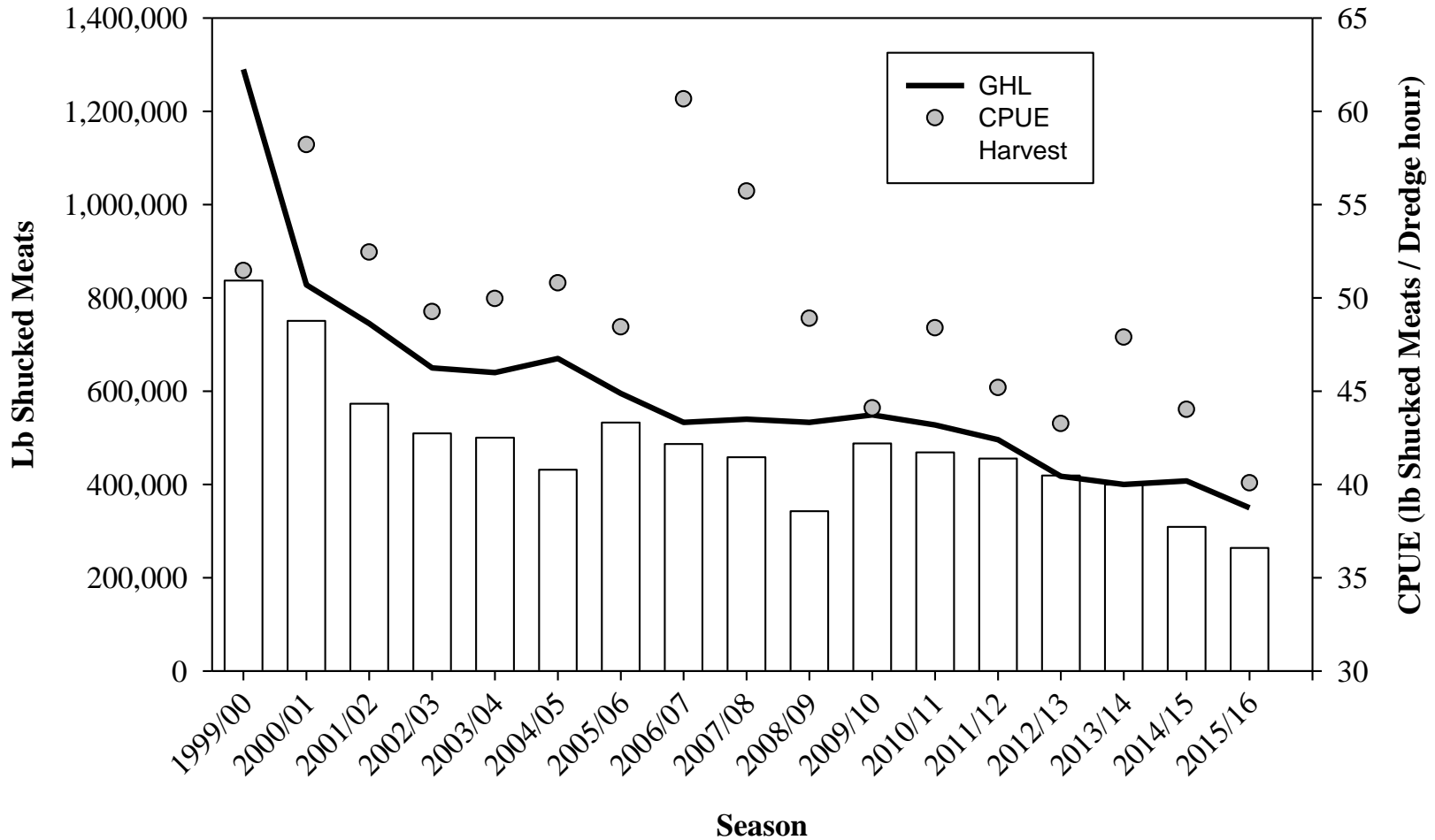
- Over the past 10 years
 - 5% of harvest comes from locations with fishery independent assessment
 - 95% of harvest managed from fishery dependent data sources
- 100% mandatory observer coverage (except in Cook Inlet)

Fishery Management

- Based on observer and fishery data managers set preseason Guideline Harvest Levels (GHLs) by:
 - District
 - Bed (for discrete beds with high fishery impact)
- In addition to preseason GHLs both minimum performance standards and crab bycatch limits are in place.

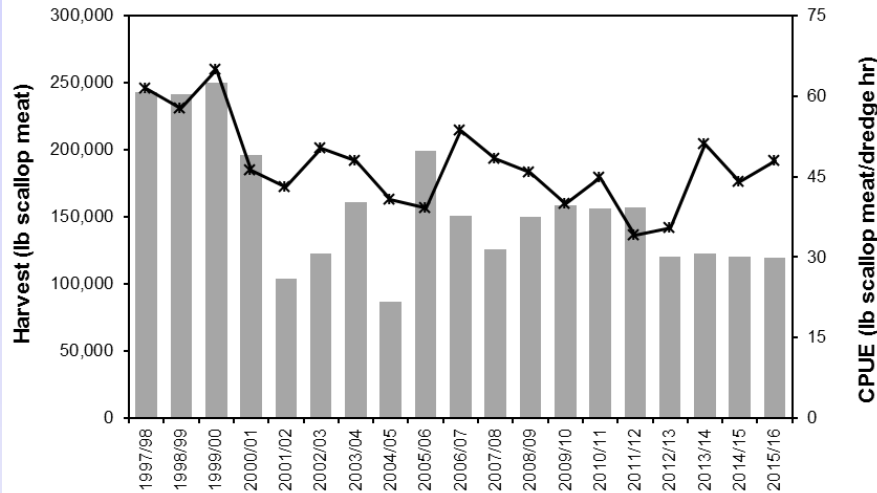
Recent Fishery Performance

Weathervane Fishery Statistics

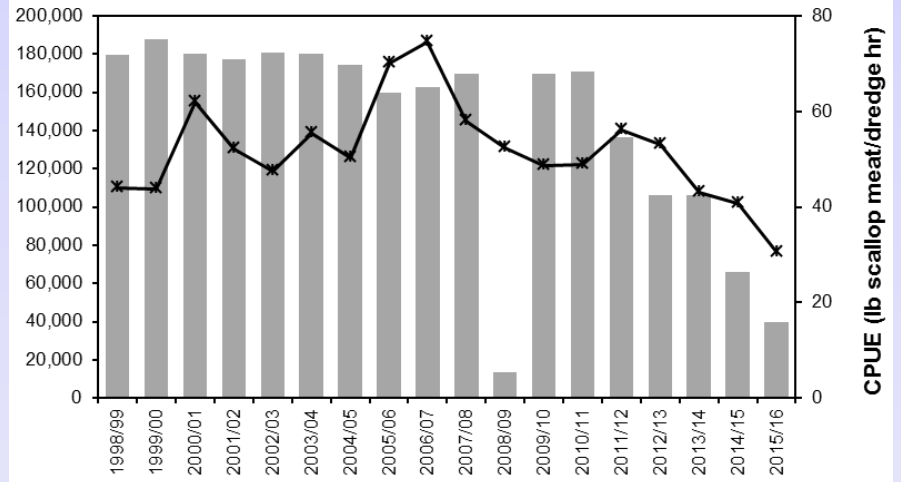


District Performance

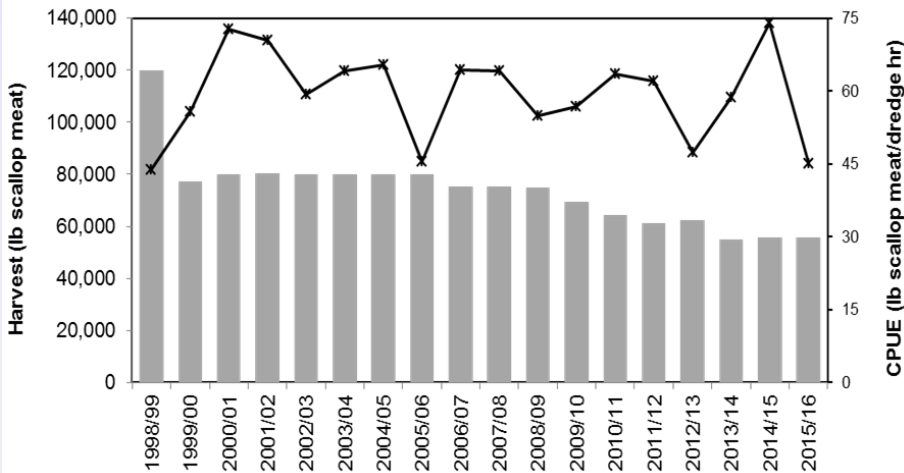
Yakutat District



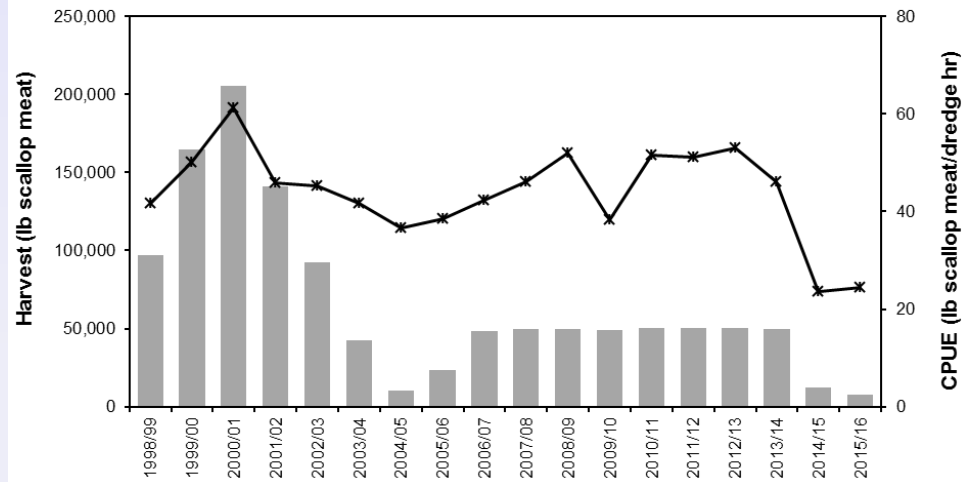
Kodiak Shelikof District



Kodiak Northeast District



Bering Sea Area



Commercial Weathervane Scallop Real Wholesale Value

SAFE Table 6-1

Year	Vessels	Catch (lb shucked meats)^a	Nominal Average Price / lb	Inflation Factor^b	Real Average Price/lb	Real Wholesale Value
2006/07	4	487,473	\$7.86	1.40	\$11.00	\$5,360,114
2007/08	4	458,313	\$5.94	1.32	\$7.82	\$3,583,127
2008/09	4	342,434	\$6.34	1.41	\$8.96	\$3,069,784
2009/10	3	488,059	\$6.48	1.34	\$8.67	\$4,229,532
2010/11	3	459,759	\$8.35	1.21	\$10.09	\$4,639,124
2011/12	4	456,058	\$10.39	1.20	\$12.51	\$5,704,225
2012/13	4	417,551	\$10.63	1.18	\$12.55	\$5,239,400
2013/14	4	399,134	\$12.25	1.04	\$12.68	\$5,060,520
2014/15	4	308,888	\$12.39	1.00	\$12.39	\$3,827,122
2015/16 ^c	4	263,934	\$12.39	1.00	\$12.39	\$3,270,142
10-Year Average	4	408,160	\$9.30		\$10.90	\$4,398,309

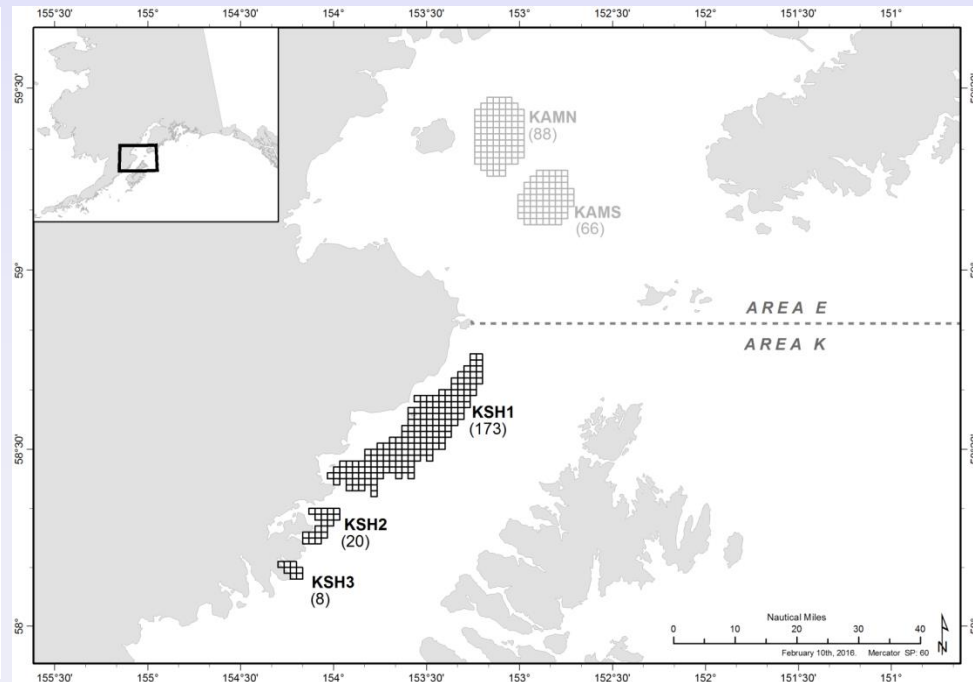
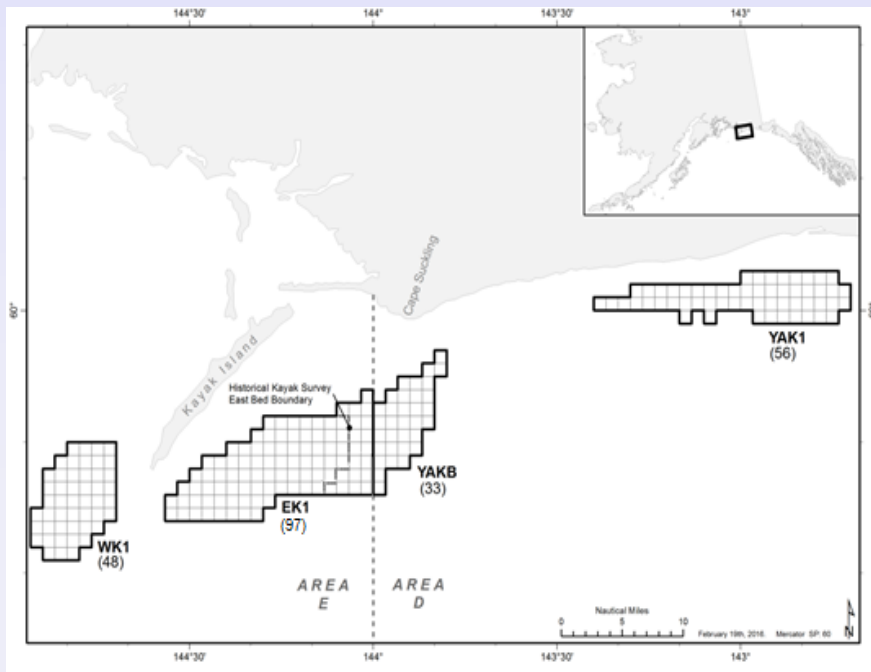
Program Changes

Observer Program Changes

- Discard sampling
 - More complete pre-recruit age data
- Shell height / meat weight relationship
 - Shucking house discards
- Special stations
 - Detailed effort data
 - Individual shell height / meat weight / age data

Fishery Independent Sampling

- Implementation of statewide survey
 - Based off of Central Region survey
 - With adjusted methods & sampling goals



Thank You



Scallop Fishery Minimum Performance Standards

SAFE Table 1-15

Area/District/ Statistical Area	Minimum Performance Standard (CPUE)	Basis Year
Yakutat Area		
Area D	35	2011/12 ^a
Kodiak Area		
<i>Northeast District</i>		
Statistical Area 525630	45	2005/06 ^a
Statistical Area 525702	52	2002/03 ^a
Remainder of NE District	43	2005/06 ^a
<i>Shelikof Distict</i>		
Combined North/South Bed	47	2003/04 ^a
Bristol Bay-Bering Sea	43	2004/05 - 2009/10 ^b

^a Lowest season CPUE since 2002/03 season

^bBased on average CPUE during the 2004/05 to 2009/10 seasons

2014/15 Scallop Fishery Tanner Crab Bycatch

SAFE Table 1-18

Area/District	Chionoecetes bycatch cap	Est number crab	Est weight (lb) ^a
Yakutat District	NE	2,119	14
Yakutat District 16	NE	306	17
Prince William Sound	NA (Closed)		
Cook Inlet	NA (Closed)		
Kodiak Northeast District	256,466	19,368	1,835
Kodiak Shelikof District	42,144	22,783	4,226
Kodiak Southwest District	12,000	12,521	885
Kodiak Semidi Islands District	NE	0	0
Alaska Peninsula Unimak Bight District	12,000	14,161	1,674
Dutch Harbor	5,000	1,070	186
Bering Sea <i>C. bairdi</i>	260,000	25,910	23,752
Bering Sea <i>C. opilio</i> and hybrids	300,000	10,328	10,413
Statewide total	887,610	108,566	42,972

NE: not established; NA: not applicable

^a Weight estimation for areas outside Cook Inlet uses estimated number crab, carapace width distributions from observer sampling and CW-weight relationship parameters from NMFS Bering Sea crab research. Cook Inlet estimate is based on sampling weight of crab by ADF&G.

Scallop Fishery Crab Bycatch Limits

SAFE Table 1-16

Area/District	Red King Crab	<i>C. bairdi</i>	<i>C. opilio</i>
Yakutat District 16	NE ^a	NE	NA ^b
Yakutat District	NE	NE	NA
Prince William Sound	NE	0.5%	NA
Cook Inlet Kamishak District	30 crab	0.5%	NA
Kodiak Northeast District	0.5% or 1.0%	0.5% or 1.0%	NA
Kodiak Shelikof District	0.5% or 1.0%	0.5% or 1.0%	NA
Kodiak Southwest District	50 ^c	12,000 ^c	NA
Kodiak Semidi Islands District	NE	NE	NA
Alaska Peninsula	0.5% or 1.0%	0.5% or 1.0%	NA
Alaska Peninsula Unimak Bight District	50 ^c	12,000 ^c	NA
Bering Sea	500 crab ^c	3 tier approach	3 tier approach
Dutch Harbor	0.5% or 1.0%	0.5% or 1.0%	NA
Adak ^d	50	10,000 crab	NA

Scallop Plan Team

- Quinn Smith, ADF&G (*chair*)
- Jim Armstrong, NPFMC (*vice-chair*)
- Ryan Burt, ADF&G
- Scott Miller, NMFS
- Peggy Murphy, NMFS
- Jie Zheng, ADF&G
- *Sara Webster, APU*
- *Ben Williams, ADF&G*
- *Ken Goldman, ADF&G*